

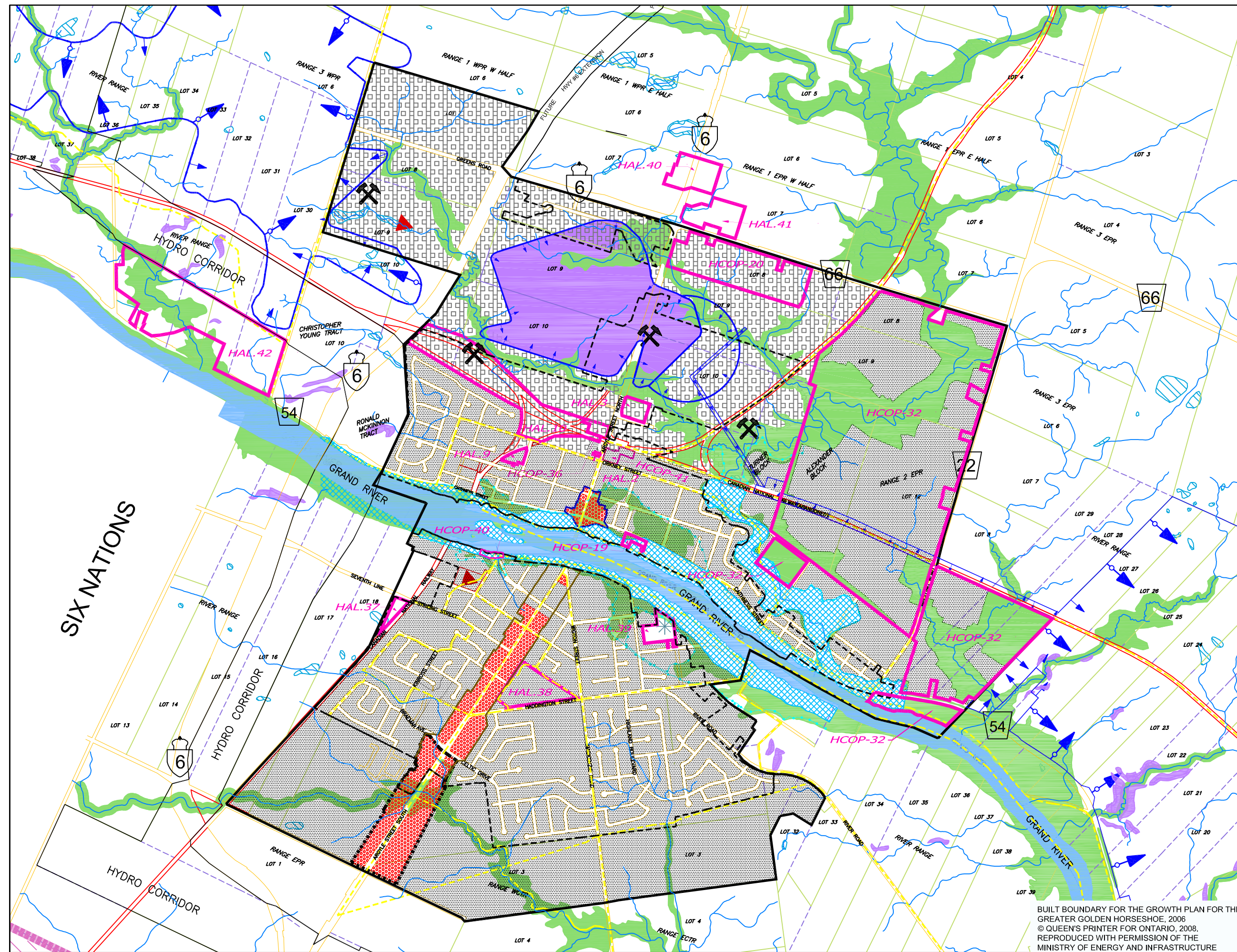


**OFFICIAL PLAN
SCHEDULE "B.1"**

**CALEDONIA URBAN AREA
LAND USE PLAN**

LEGEND

- CORE NATURAL ENVIRONMENT AREAS
 - PROvincially SIGNIFICANT WETLANDS
 - RIVERINE HAZARD LANDS
- NATURAL ENVIRONMENT AREAS
 - FLOODWAY
 - OTHER HAZARD LANDS
 - FLOODWAY/ FLOOD FRINGE LIMITS
 - NATURAL ENVIRONMENT/WETLAND AREAS
- AGRICULTURE
- MINERAL AGGREGATE RESOURCE AREAS
- GYPSUM DEPOSITS
- ABANDONED MINES
- RESIDENTIAL
- COMMUNITY COMMERCIAL
- LARGE FORMAT RETAIL
- MAJOR INDUSTRIAL
- INDUSTRIAL
- URBAN BUSINESS PARK
- RURAL INDUSTRIAL
- INDUSTRIAL INFLUENCE AREA
- SEWAGE TREATMENT FACILITY
- ACTIVE WASTE DISPOSAL SITES
- APPROXIMATE LOCATION OF FORMER LANDFILL SITES
- SITE SPECIFIC POLICY AREAS
- URBAN BOUNDARY
- SECONDARY PLAN AREA
- HAMLET BOUNDARY
- PROVINCIAL HIGHWAY
- HALDIMAND ROAD
- WATER COURSE
- INTENSIFICATION AREA
- INTENSIFICATION CORRIDOR
- BUILT BOUNDARY
- IDENTIFIED TRAIL LOCATIONS



BUILT BOUNDARY FOR THE GROWTH PLAN FOR THE GREATER GOLDEN HORSESHOE, 2006
 © QUEEN'S PRINTER FOR ONTARIO, 2008.
 REPRODUCED WITH PERMISSION OF THE MINISTRY OF ENERGY AND INFRASTRUCTURE
 MINISTRY MOD #75 DECISION DATE: JUNE 8, 2009



1 IN = 550 METRES
 OFFICE CONSOLIDATION NOV 2019



**OFFICIAL PLAN
SCHEDULE "B.2"**

**CAYUGA URBAN AREA
LAND USE PLAN**

LEGEND

CORE NATURAL ENVIRONMENT AREAS

- PROVINCIALY SIGNIFICANT WETLANDS
- RIVERINE HAZARD LANDS

NATURAL ENVIRONMENT AREAS

- FLOODWAY
- OTHER HAZARD LANDS
- FLOODWAY/ FLOOD FRINGE LIMITS
- NATURAL ENVIRONMENT/WETLAND AREAS

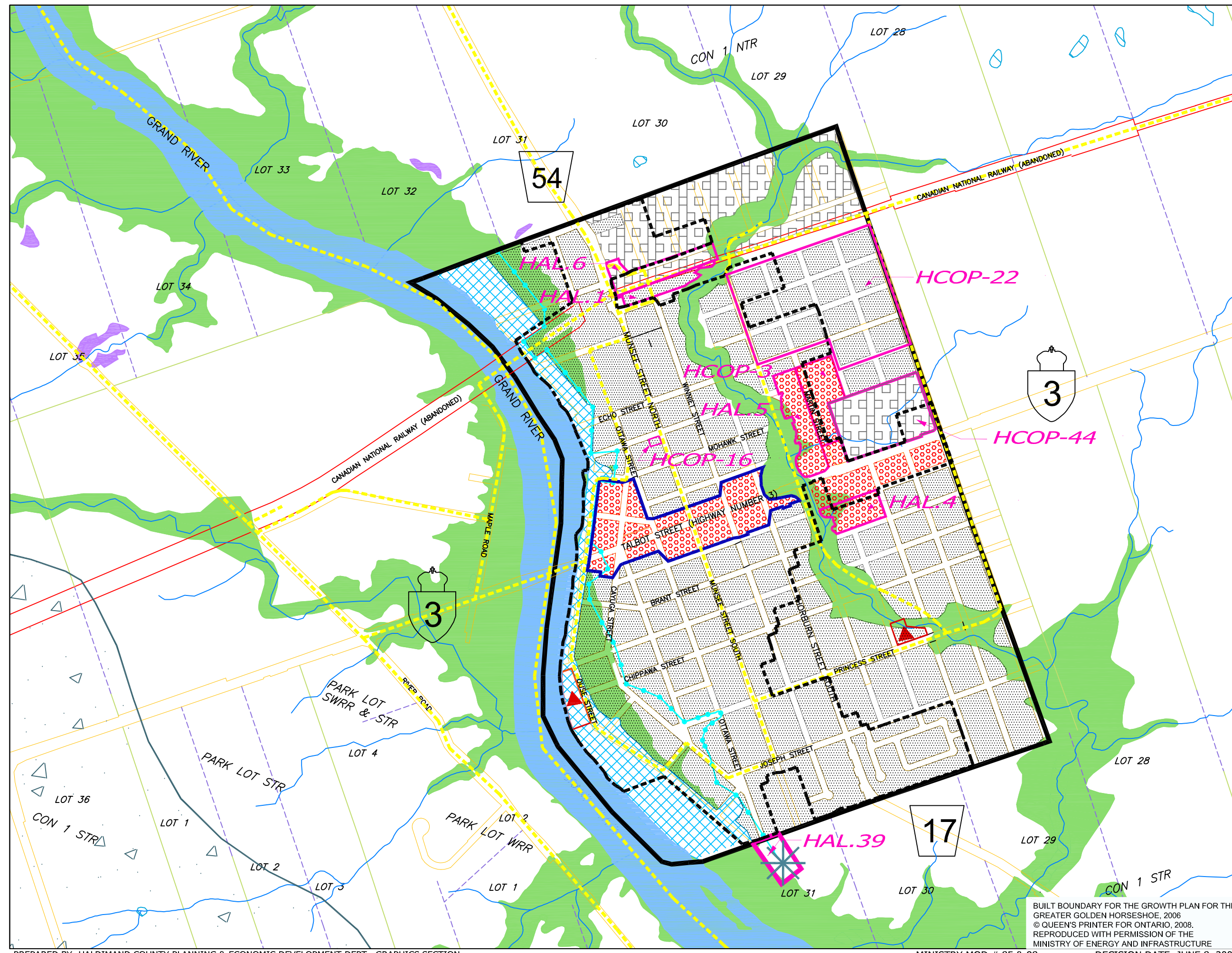
- AGRICULTURE
- MINERAL AGGREGATE RESOURCE AREAS
- GYPSUM DEPOSITS
- ABANDONED MINES
- RESIDENTIAL
- COMMUNITY COMMERCIAL
- LARGE FORMAT RETAIL
- MAJOR INDUSTRIAL
- INDUSTRIAL
- URBAN BUSINESS PARK
- RURAL INDUSTRIAL
- INDUSTRIAL INFLUENCE AREA
- SEWAGE TREATMENT FACILITY
- ACTIVE WASTE DISPOSAL SITES
- APPROXIMATE LOCATION OF FORMER LANDFILL SITES
- SITE SPECIFIC POLICY AREAS

- URBAN BOUNDARY
- SECONDARY PLAN AREA
- HAMLET BOUNDARY
- PROVINCIAL HIGHWAY
- HALDIMAND ROAD
- WATER COURSE
- INTENSIFICATION AREA
- INTENSIFICATION CORRIDOR
- BUILT BOUNDARY
- IDENTIFIED TRAIL LOCATIONS



1 IN = 300 METRES

OFFICE CONSOLIDATION NOV 2019



BUILT BOUNDARY FOR THE GROWTH PLAN FOR THE GREATER GOLDEN HORSESHOE, 2006
© QUEEN'S PRINTER FOR ONTARIO, 2008.
REPRODUCED WITH PERMISSION OF THE MINISTRY OF ENERGY AND INFRASTRUCTURE

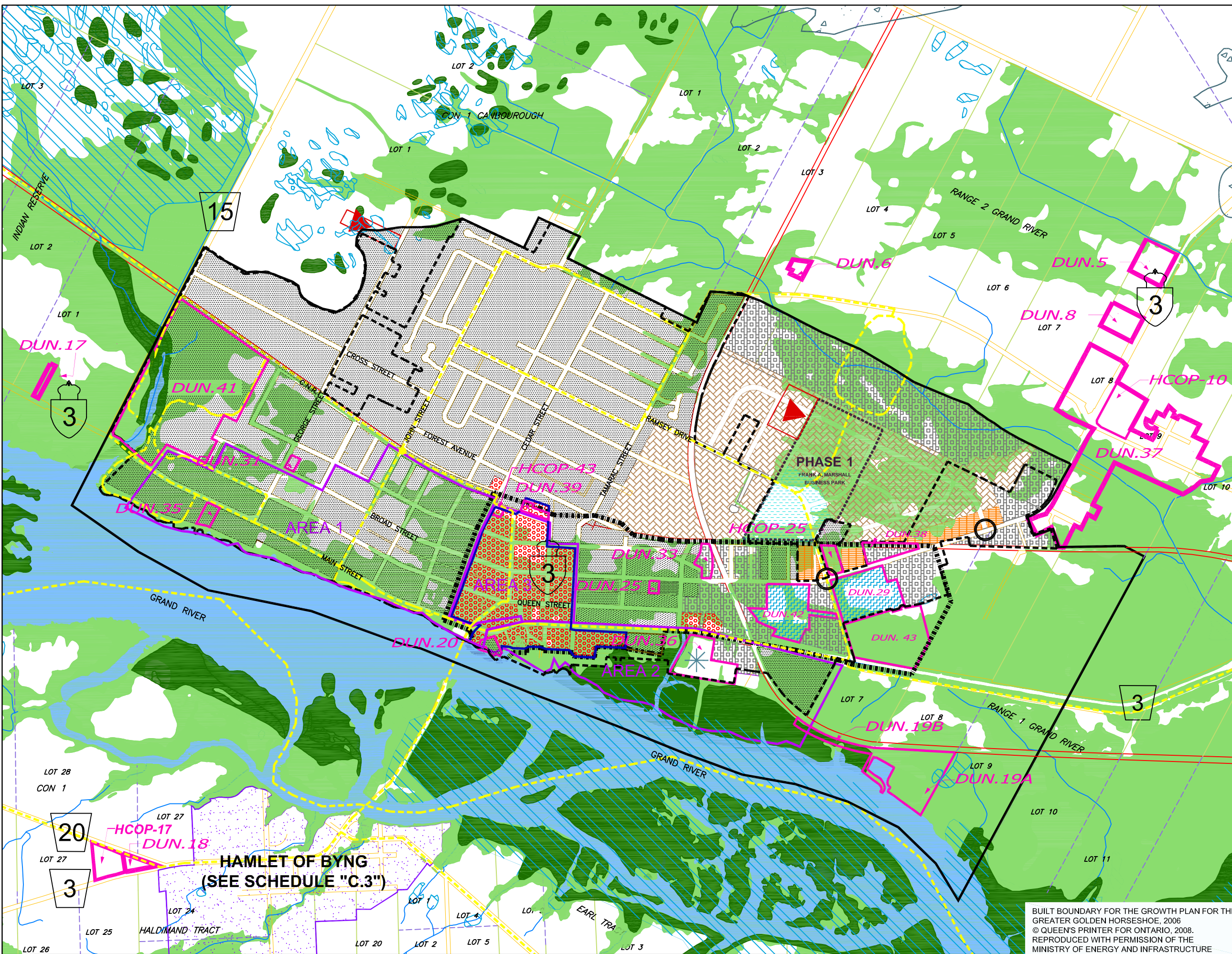


**OFFICIAL PLAN
SCHEDULE "B.3"**

**DUNNVILLE URBAN AREA
LAND USE PLAN**

LEGEND

- CORE NATURAL ENVIRONMENT AREAS
 - PROVINCIALY SIGNIFICANT WETLANDS
 - RIVERINE HAZARD LANDS
- NATURAL ENVIRONMENT AREAS
 - FLOODWAY
 - OTHER HAZARD LANDS
 - FLOODWAY/ FLOOD FRINGE LIMITS
 - NATURAL ENVIRONMENT/WETLAND AREAS
- AGRICULTURE
- MINERAL AGGREGATE RESOURCE AREAS
- GYPSUM DEPOSITS
- ABANDONED MINES
- RESIDENTIAL
- COMMUNITY COMMERCIAL
- LARGE FORMAT RETAIL
- MAJOR INDUSTRIAL
- INDUSTRIAL
- URBAN BUSINESS PARK
- BUSINESS PARK / COMMERCIAL
- BUSINESS PARK
- URBAN INDUSTRIAL
- GATEWAY
- RURAL INDUSTRIAL
- INDUSTRIAL INFLUENCE AREA
- SEWAGE TREATMENT FACILITY
- APPROXIMATE LOCATION OF FORMER LANDFILL SITES
- SITE SPECIFIC POLICY AREAS
- URBAN BOUNDARY
- SECONDARY PLAN AREA
- HAMLET BOUNDARY
- SPECIAL FLOOD PLAIN POLICY AREA
- PROVINCIAL HIGHWAY
- HALDIMAND ROAD
- WATER COURSE
- INTENSIFICATION AREA
- INTENSIFICATION CORRIDOR
- BUILT BOUNDARY
- IDENTIFIED TRAIL LOCATIONS



BUILT BOUNDARY FOR THE GROWTH PLAN FOR THE GREATER GOLDEN HORSESHOE, 2006
 © QUEEN'S PRINTER FOR ONTARIO, 2008.
 REPRODUCED WITH PERMISSION OF THE MINISTRY OF ENERGY AND INFRASTRUCTURE





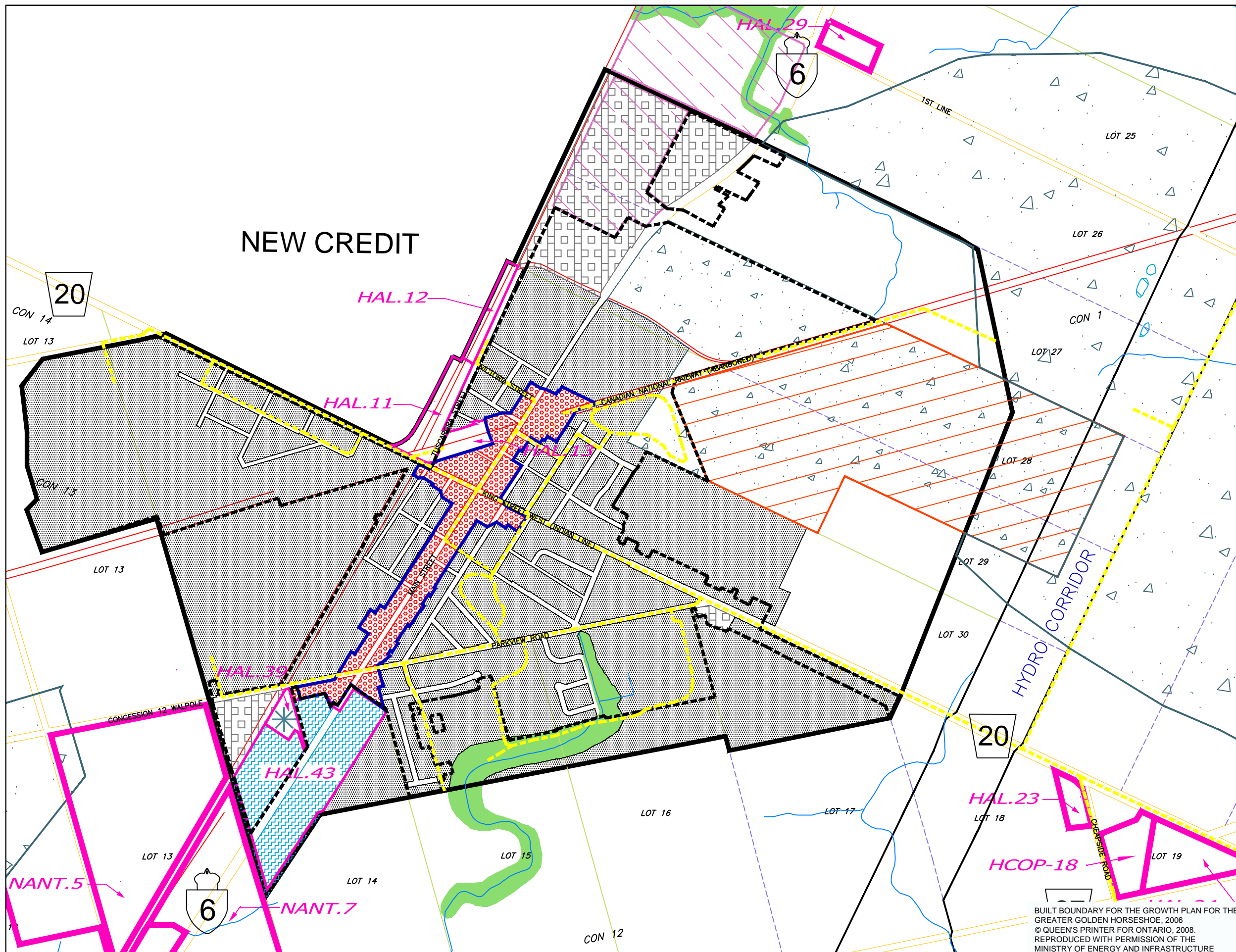
**OFFICIAL PLAN
SCHEDULE "B.4"**

**HAGERSVILLE URBAN AREA
LAND USE PLAN**

- LEGEND**
- CORE NATURAL ENVIRONMENT AREAS**
- PROVINCIALY SIGNIFICANT WETLANDS
 - RIVERINE HAZARD LANDS
- NATURAL ENVIRONMENT AREAS**
- FLOODWAY
 - OTHER HAZARD LANDS
 - FLOODWAY/ FLOOD FRINGE LIMITS
 - NATURAL ENVIRONMENT/WETLAND AREAS

- AGRICULTURE
- MINERAL AGGREGATE RESOURCE AREAS
- LICENSED AGGREGATE AREA
- GYPSUM DEPOSITS
- ABANDONED MINES
- RESIDENTIAL
- COMMUNITY COMMERCIAL
- LARGE FORMAT RETAIL
- MAJOR INDUSTRIAL
- INDUSTRIAL
- URBAN BUSINESS PARK
- RURAL INDUSTRIAL
- INDUSTRIAL INFLUENCE AREA
- ★ SEWAGE TREATMENT FACILITY
- ★ ACTIVE WASTE DISPOSAL SITES
- ▲ APPROXIMATE LOCATION OF FORMER LANDFILL SITES
- SITE SPECIFIC POLICY AREAS
- URBAN BOUNDARY
- SECONDARY PLAN AREA
- HAMLET BOUNDARY
- LANDS PROPOSED TO JOIN THE RESERVE
- PROVINCIAL HIGHWAY
- HALDIMAND ROAD
- WATER COURSE
- INTENSIFICATION AREA
- INTENSIFICATION CORRIDOR
- BUILT BOUNDARY
- IDENTIFIED TRAIL LOCATIONS

1 IN = 350 METRES



BUILT BOUNDARY FOR THE GROWTH PLAN FOR THE GREATER GOLDEN HORSESHOE, 2006
© QUEEN'S PRINTER FOR ONTARIO, 2008.
REPRODUCED WITH PERMISSION OF THE MINISTRY OF ENERGY AND INFRASTRUCTURE

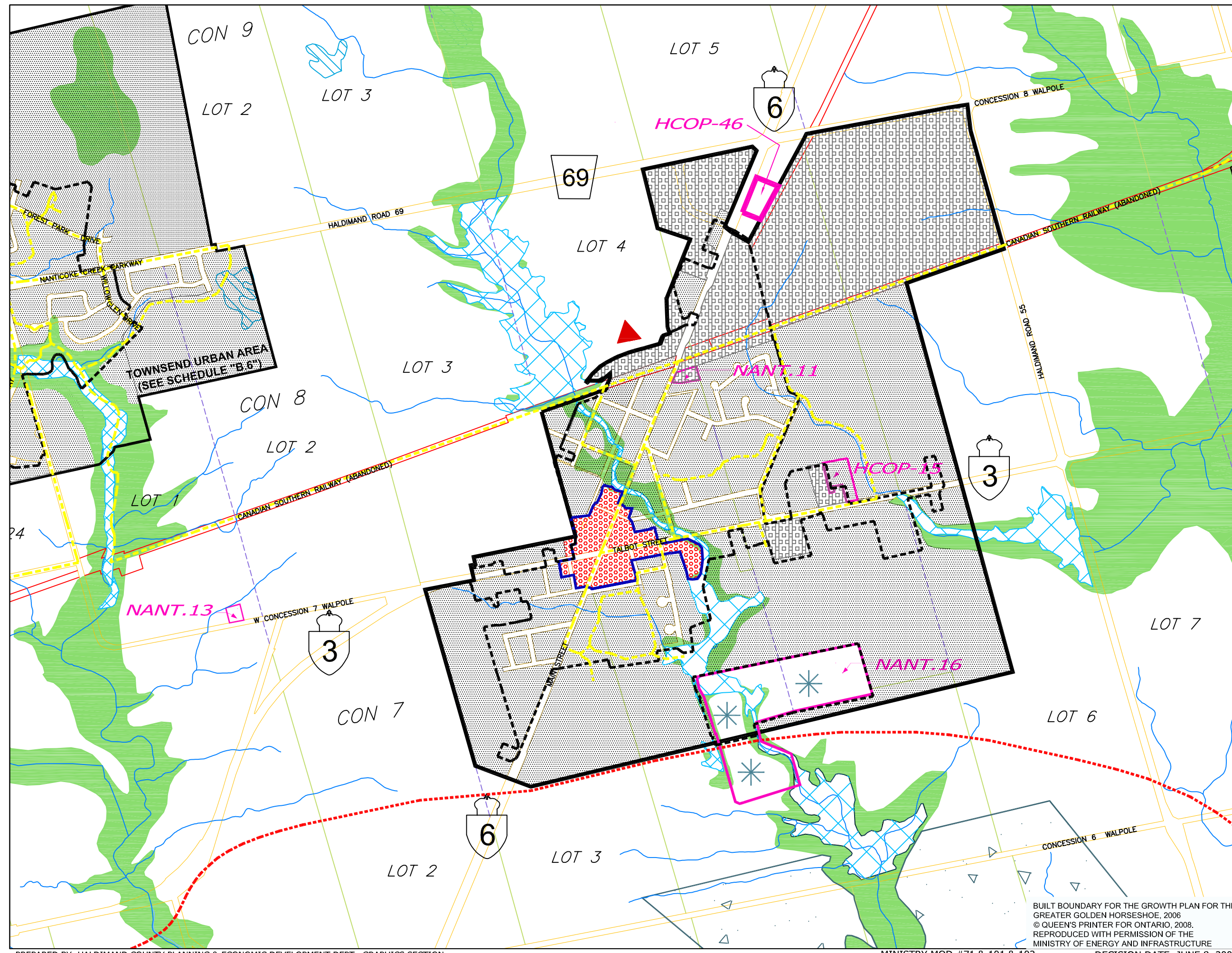


**OFFICIAL PLAN
SCHEDULE "B.5"**

**JARVIS URBAN AREA
LAND USE PLAN**

LEGEND

- CORE NATURAL ENVIRONMENT AREAS
 - PROvincially SIGNIFICANT WETLANDS
 - RIVERINE HAZARD LANDS
- NATURAL ENVIRONMENT AREAS
 - FLOODWAY
 - OTHER HAZARD LANDS
 - FLOODWAY/ FLOOD FRINGE LIMITS
 - NATURAL ENVIRONMENT/WETLAND AREAS
- AGRICULTURE
- MINERAL AGGREGATE RESOURCE AREAS
- GYPSUM DEPOSITS
- ABANDONED MINES
- RESIDENTIAL
- COMMUNITY COMMERCIAL
- LARGE FORMAT RETAIL
- MAJOR INDUSTRIAL
- INDUSTRIAL
- URBAN BUSINESS PARK
- RURAL INDUSTRIAL
- INDUSTRIAL INFLUENCE AREA
- SEWAGE TREATMENT FACILITY
- ACTIVE WASTE DISPOSAL SITES
- APPROXIMATE LOCATION OF FORMER LANDFILL SITES
- SITE SPECIFIC POLICY AREAS
- URBAN BOUNDARY
- SECONDARY PLAN AREA
- TOWNSEND FUTURE URBAN BOUNDARY
- HAMLET BOUNDARY
- PROVINCIAL HIGHWAY
- HALDIMAND ROAD
- WATER COURSE
- INTENSIFICATION AREA
- INTENSIFICATION CORRIDOR
- BUILT BOUNDARY
- IDENTIFIED TRAIL LOCATIONS



BUILT BOUNDARY FOR THE GROWTH PLAN FOR THE GREATER GOLDEN HORSESHOE, 2006
© QUEEN'S PRINTER FOR ONTARIO, 2008.
REPRODUCED WITH PERMISSION OF THE MINISTRY OF ENERGY AND INFRASTRUCTURE





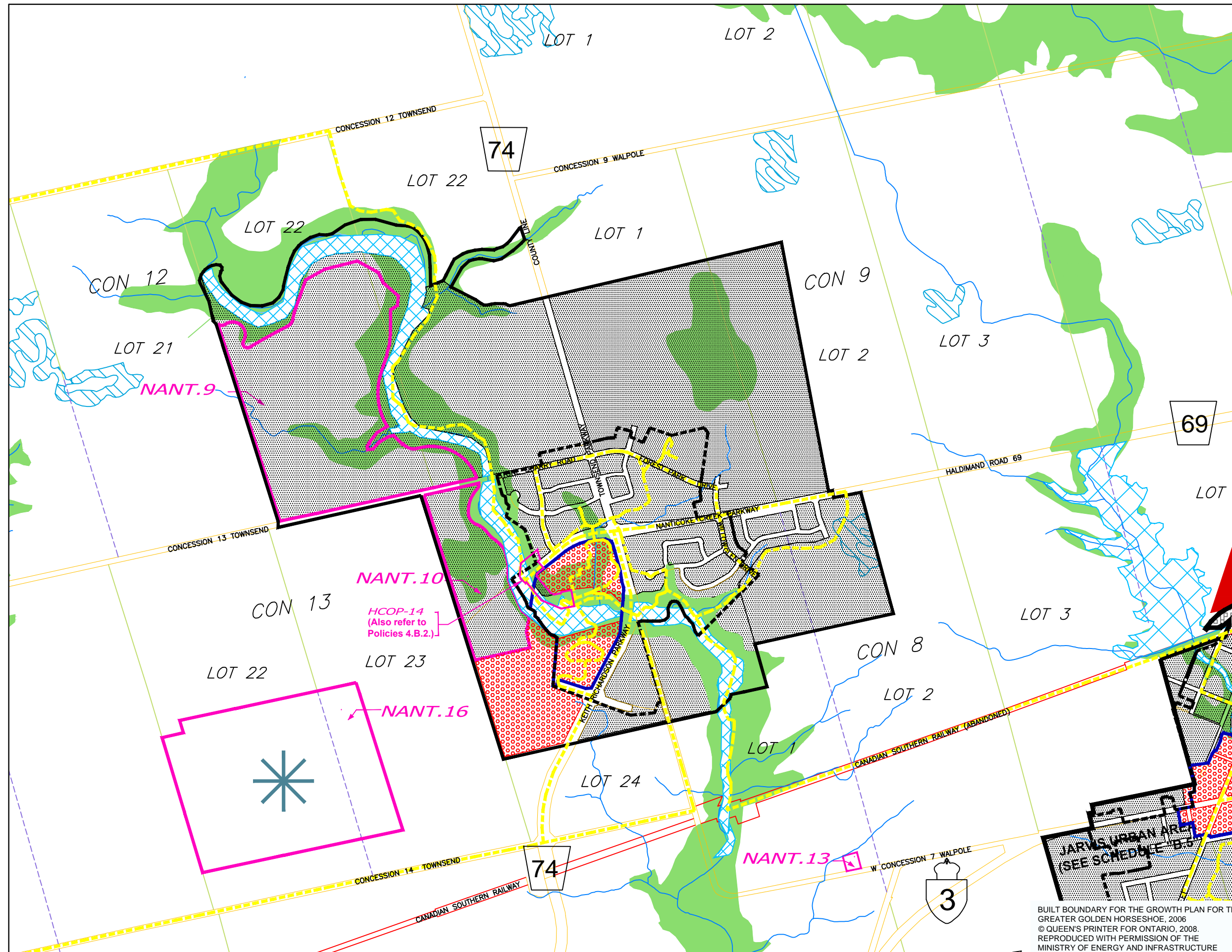
**OFFICIAL PLAN
SCHEDULE "B.6"**

**TOWNSEND URBAN AREA
LAND USE PLAN**

LEGEND

- CORE NATURAL ENVIRONMENT AREAS
 - PROvincially SIGNIFICANT WETLANDS
 - RIVERINE HAZARD LANDS
- NATURAL ENVIRONMENT AREAS
 - FLOODWAY
 - OTHER HAZARD LANDS
 - FLOODWAY/ FLOOD FRINGE LIMITS
 - NATURAL ENVIRONMENT/WETLAND AREAS
- AGRICULTURE
- MINERAL AGGREGATE RESOURCE AREAS
- GYPSUM DEPOSITS
- ABANDONED MINES
- RESIDENTIAL
- COMMUNITY COMMERCIAL
- LARGE FORMAT RETAIL
- MAJOR INDUSTRIAL
- INDUSTRIAL
- URBAN BUSINESS PARK
- RURAL INDUSTRIAL
- INDUSTRIAL INFLUENCE AREA
- SEWAGE TREATMENT FACILITY
- ACTIVE WASTE DISPOSAL SITES
- APPROXIMATE LOCATION OF FORMER LANDFILL SITES
- SITE SPECIFIC POLICY AREAS
- URBAN BOUNDARY
- SECONDARY PLAN AREA
- TOWNSEND FUTURE URBAN BOUNDARY
- HAMLET BOUNDARY
- PROVINCIAL HIGHWAY
- HALDIMAND ROAD
- WATER COURSE
- INTENSIFICATION AREA
- INTENSIFICATION CORRIDOR
- BUILT BOUNDARY
- IDENTIFIED TRAIL LOCATIONS

1 IN = 350 METRES



BUILT BOUNDARY FOR THE GROWTH PLAN FOR THE GREATER GOLDEN HORSESHOE, 2006
© QUEEN'S PRINTER FOR ONTARIO, 2008.
REPRODUCED WITH PERMISSION OF THE MINISTRY OF ENERGY AND INFRASTRUCTURE