



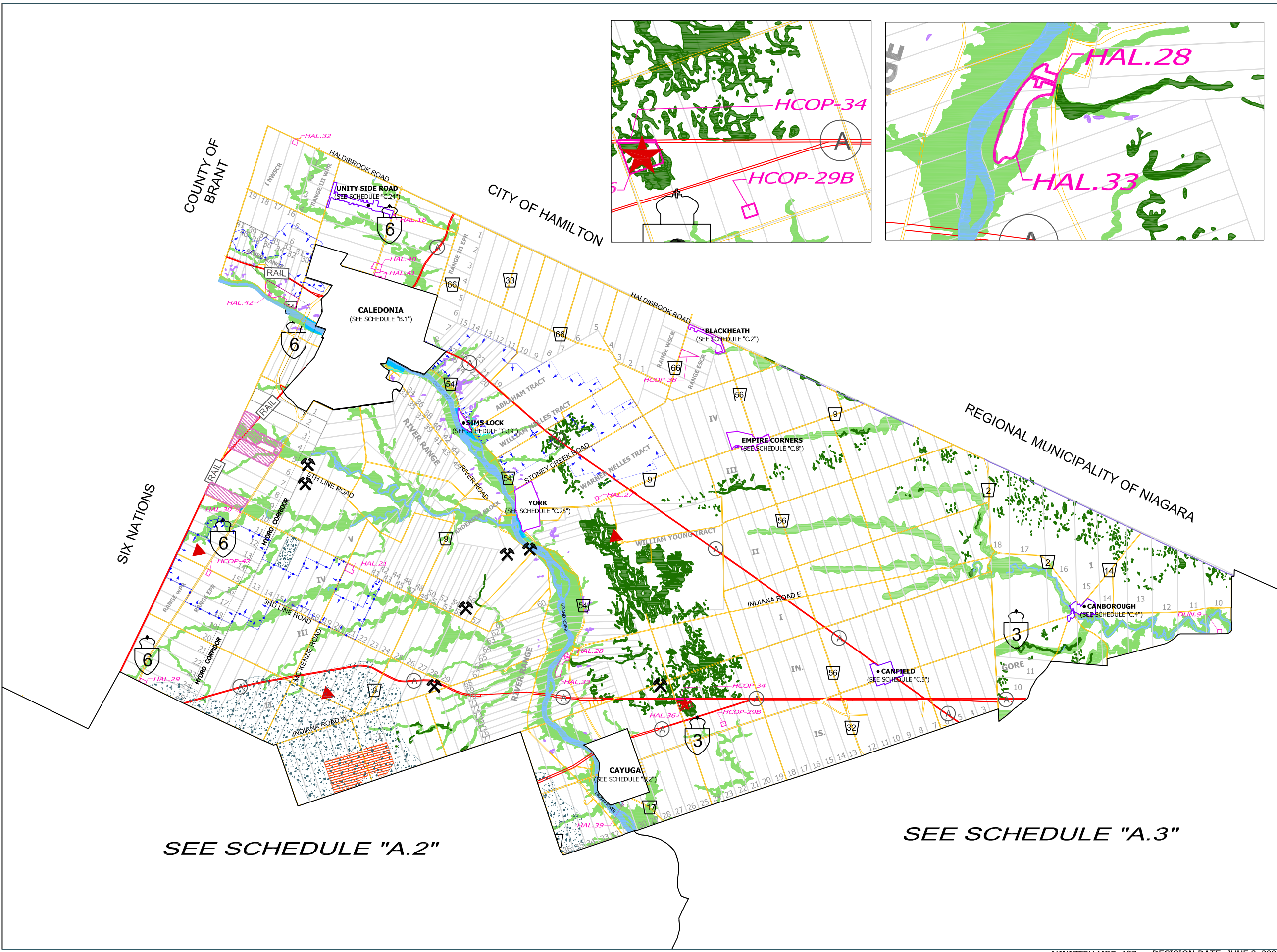
**OFFICIAL PLAN
SCHEDULE "A.1"**

**HALDIMAND COUNTY NORTH
LAND USE PLAN**

LEGEND

- CORE NATURAL ENVIRONMENT AREAS**
- PROVINCIAL SIGNIFICANT WETLANDS
 - RIVERINE HAZARD LANDS
- NATURAL ENVIRONMENT AREAS**
- LAKESHORE HAZARD LANDS
 - FLOODWAY
 - OTHER HAZARD LANDS
- AGRICULTURE**
- AGRICULTURE
- MINERAL AGGREGATE RESOURCE AREAS**
- MINERAL AGGREGATE RESOURCE AREAS
- LICENSED AGGREGATE AREA**
- LICENSED AGGREGATE AREA
- GYPSUM DEPOSITS**
- GYPSUM DEPOSITS
- ABANDONED MINES**
- ABANDONED MINES
- MAJOR INDUSTRIAL**
- MAJOR INDUSTRIAL
- INDUSTRIAL**
- INDUSTRIAL
- RURAL INDUSTRIAL**
- RURAL INDUSTRIAL
- INDUSTRIAL INFLUENCE AREA**
- INDUSTRIAL INFLUENCE AREA
- SEWAGE TREATMENT FACILITY**
- SEWAGE TREATMENT FACILITY
- ACTIVE WASTE DISPOSAL SITES**
- ACTIVE WASTE DISPOSAL SITES
- APPROXIMATE LOCATION OF FORMER WASTE DISPOSAL SITES**
- APPROXIMATE LOCATION OF FORMER WASTE DISPOSAL SITES
- SITE SPECIFIC POLICY AREAS**
- SECTION NUMBER
- URBAN BOUNDARY**
- URBAN BOUNDARY
- HAMLET BOUNDARY**
- HAMLET BOUNDARY
- RESORT RESIDENTIAL BOUNDARY**
- RESORT RESIDENTIAL BOUNDARY
- LANDS PROPOSED TO JOIN THE RESERVE**
- LANDS PROPOSED TO JOIN THE RESERVE
- PORTS**
- PORTS
- PROVINCIAL HIGHWAY**
- PROVINCIAL HIGHWAY
- HALDIMAND ROAD**
- HALDIMAND ROAD
- ABANDONED RAILWAYS**
- ABANDONED RAILWAYS
- ACTIVE RAILWAYS**
- ACTIVE RAILWAYS
- WATER COURSE**
- WATER COURSE

1 IN = 3000 METRES



SEE SCHEDULE "A.2"

SEE SCHEDULE "A.3"



**OFFICIAL PLAN
SCHEDULE "A.2"**

**HALDIMAND COUNTY SOUTHWEST
LAND USE PLAN**

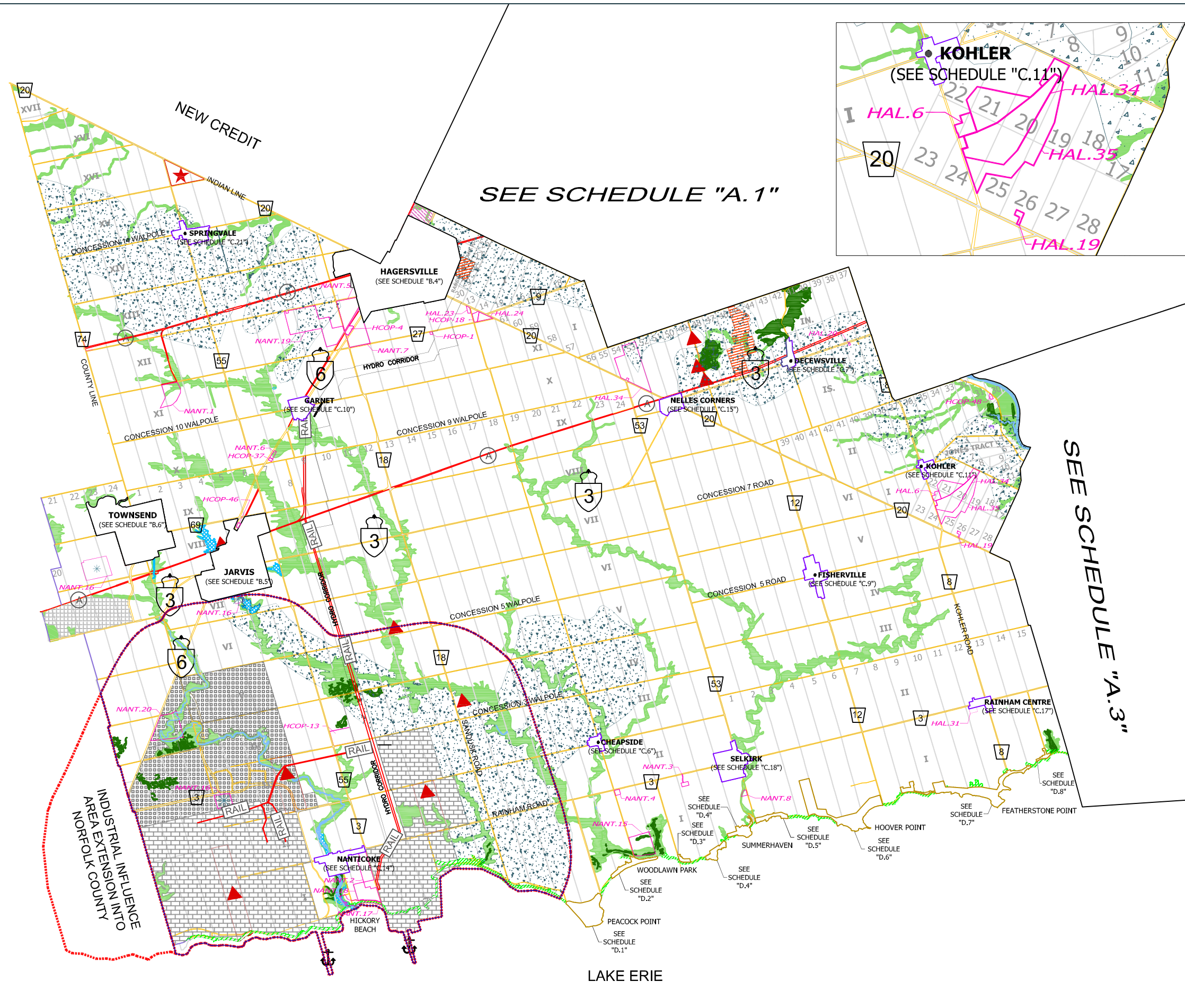
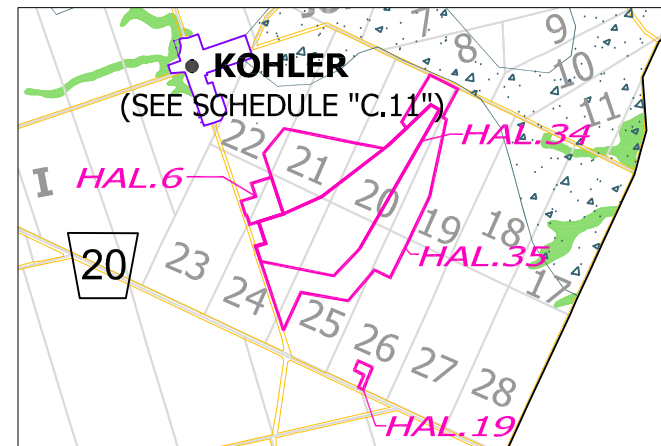
LEGEND

CORE NATURAL ENVIRONMENT AREAS

- PROVINCIALY SIGNIFICANT WETLANDS
 - RIVERINE HAZARD LANDS
- NATURAL ENVIRONMENT AREAS
- LAKESHORE HAZARD LANDS
 - FLOODWAY
 - OTHER HAZARD LANDS

- AGRICULTURE
- MINERAL AGGREGATE RESOURCE AREAS
- LICENSED AGGREGATE AREA
- GYPSUM DEPOSITS
- ABANDONED MINES
- MAJOR INDUSTRIAL
- INDUSTRIAL
- RURAL INDUSTRIAL
- INDUSTRIAL INFLUENCE AREA
- SEWAGE TREATMENT FACILITY
- ACTIVE WASTE DISPOSAL SITES
- APPROXIMATE LOCATION OF FORMER WASTE DISPOSAL SITES
- SITE SPECIFIC POLICY AREAS
- URBAN BOUNDARY
- HAMLET BOUNDARY
- RESORT RESIDENTIAL BOUNDARY
- LANDS PROPOSED TO JOIN THE RESERVE
- PORTS
- PROVINCIAL HIGHWAY
- HALDIMAND ROAD
- ABANDONED RAILWAYS
- ACTIVE RAILWAYS
- WATER COURSE
- STRATEGIC EMPLOYMENT AREA

1 IN = 3000 METRES



SEE SCHEDULE "A.1"

SEE SCHEDULE "A.3"



OFFICIAL PLAN SCHEDULE "A.3"

HALDIMAND COUNTY SOUTHEAST LAND USE PLAN

LEGEND

- CORE NATURAL ENVIRONMENT AREAS**
- PROVINCIAL SIGNIFICANT WETLANDS
 - RIVERINE HAZARD LANDS
- NATURAL ENVIRONMENT AREAS**
- LAKESHORE HAZARD LANDS
 - FLOODWAY
 - OTHER HAZARD LANDS
- AGRICULTURE**
- MINERAL AGGREGATE RESOURCE AREAS
 - LICENSED AGGREGATE AREA
 - GYPSUM DEPOSITS
 - ABANDONED MINES
 - MAJOR INDUSTRIAL
 - INDUSTRIAL
 - RURAL INDUSTRIAL
 - INDUSTRIAL INFLUENCE AREA
 - SEWAGE TREATMENT FACILITY
 - ACTIVE WASTE DISPOSAL SITES
 - APPROXIMATE LOCATION OF FORMER WASTE DISPOSAL SITES
 - SITE SPECIFIC POLICY AREAS
- URBAN BOUNDARY**
- HAMLET BOUNDARY
 - RESORT RESIDENTIAL BOUNDARY
 - LANDS PROPOSED TO JOIN THE RESERVE
 - PORTS
 - PROVINCIAL HIGHWAY
 - HALDIMAND ROAD
 - ABANDONED RAILWAYS
 - ACTIVE RAILWAYS
 - WATER COURSE

1 IN = 3000 METRES
OFFICE CONSOLIDATION NOV 2019

